



The MPR series pumps are outfitted with both, load sensing and pressure compensation. If certain applications require a pressure compensated pump only, means can be taken to eliminate the load sensing portion of the MPR units. This can be done either externally or internally.

To cancel the load sensing externally: connect "P" to "X" which is the load sensing port. By introducing system pressure into the load sensing port, this plus the additional 300 psi from the spring will hold the load sensing spool in a deactive position therefore eliminating load sensing. (see illustration A)

To cancel the load sensing internally: the load sensing/pressure compensator assembly must be removed and altered. Although this maybe cumbersome, no external plumbing is required. (see illustration B)

Procedure:

- 1) Remove the rear cover from the main housing.
- 2) Remove the stroking cup from the control spool assembly (item 1).
- 3) Remove the hex nut (item 2) from the bottom of the control spool assembly to expose the load sensing spool.
- 4) Measure the difference "X" between the load sensing spool and the inside of the hex cap. Typically this measurement will be 0.433 inches.
- 5) Install a ¼ inch diameter slug of the proper length between the load sensing spool and the hex cap.
- 6) Re-assemble the hex cap, stroking cup, and re-seal the rear cover.

By installing a slug in this location, you in fact physically disable the load sensing spool; therefore, eliminating it.

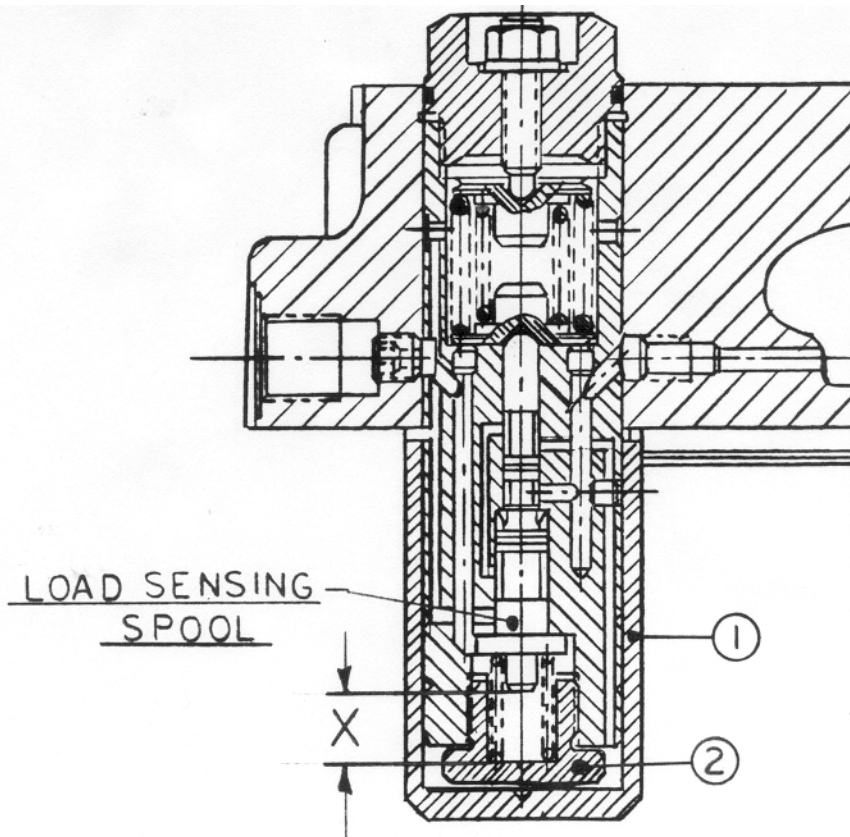


Illustration  
"B"

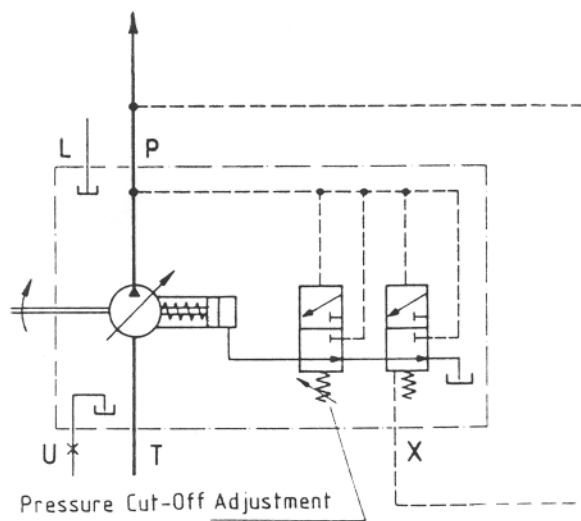


Illustration  
"A"