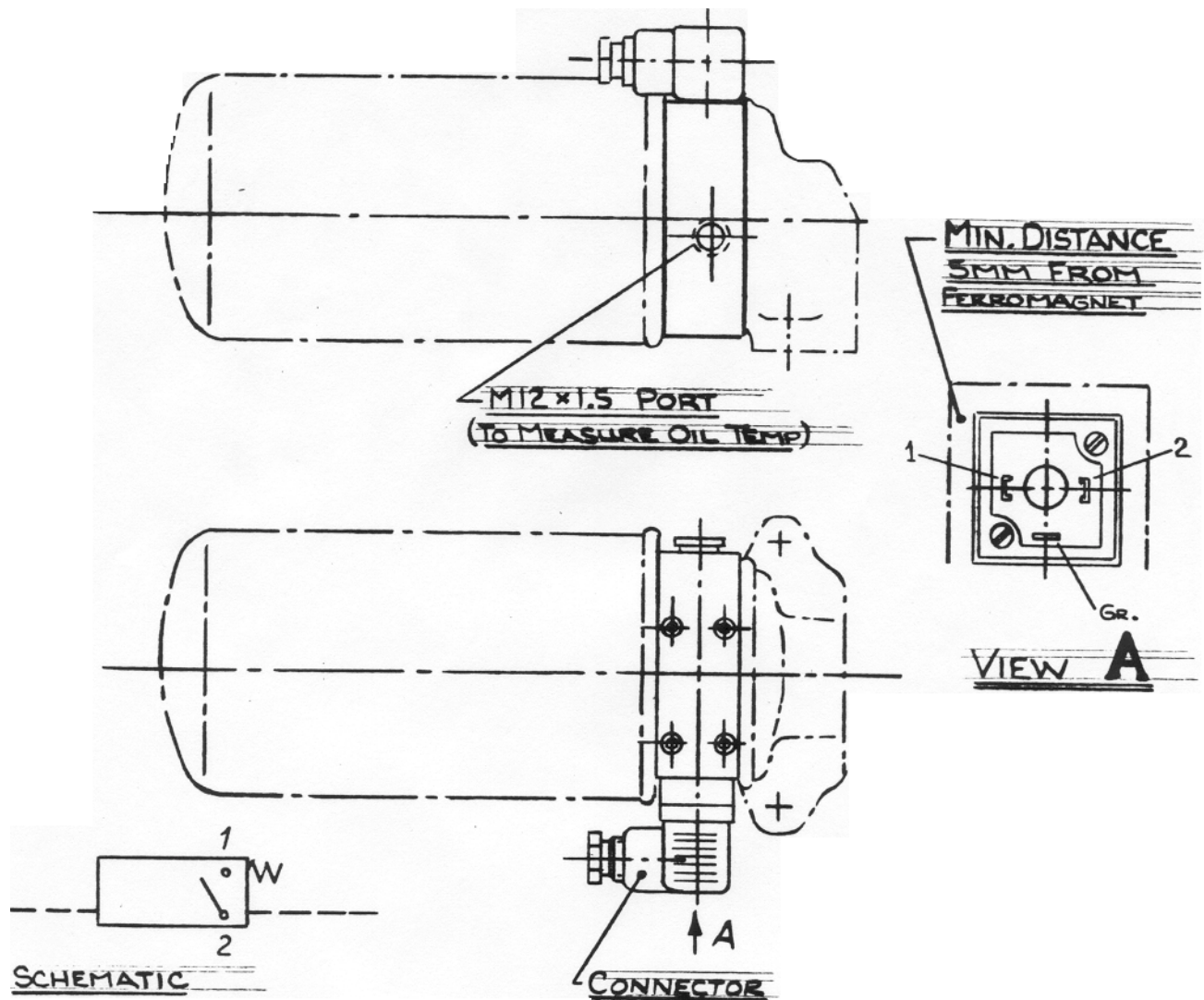




FILTER DIFFERENTIAL PRESSURE SWITCH FOR BPV'S

Bulletin No.
BPV 000
03.89/008/06

This optionally supplied pressure switch monitors the pressure drop through the oil filter on BPV'S. If the pressure difference between input pressure to the filter and boost pressure of the BPV exceeds 2 Bar (29 psi), an electric contact is closed which can be used to actuate a warning signal to indicate the filter's condition. This switch can only be used if the BPV is equipped with the larger of the two standard filters. **IN NO WAY, SHOULD THE INSTALLATION OF THIS SWITCH SUBSTITUTE FOR REGULARLY SCHEDULED FILTER CHANGES AND ROUTINE MAINTENANCE!**



TECHNICAL DATA

| Switch Pressure | Max. Current | Max. Voltage | Switch Power |
|----------------------------|--------------|--------------|--------------|
| $\Delta P = 2 \text{ Bar}$ | 1 Amp | 250 - 300 | 60VA |

Linde Hydraulics Corporation, P.O. Box 82, Canfield, Ohio 44406