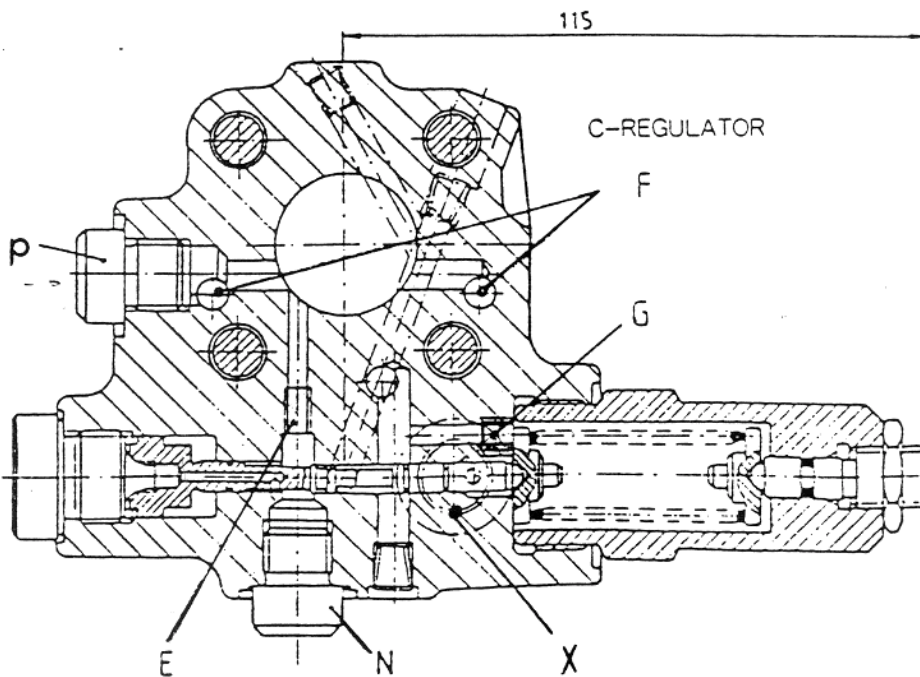
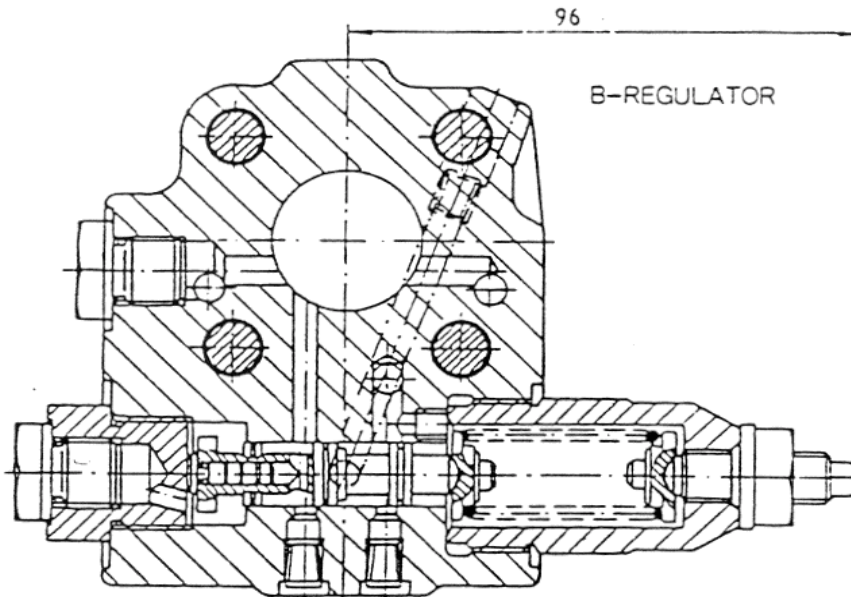


Modification to regulators of BPR 75 and 105

In order to improve the function of these regulators and to extend the range of application, we've modified the former regulator (B-regulator) and replaced it by a new regulator (C-regulator).



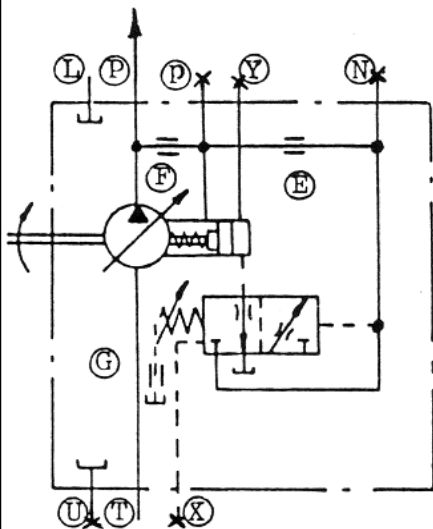
Design of the New regulator is to promote three functions:

- 1) Constant pressure regulation
- 2) load sensing with "internal" command
- 3) load sensing with "external" command

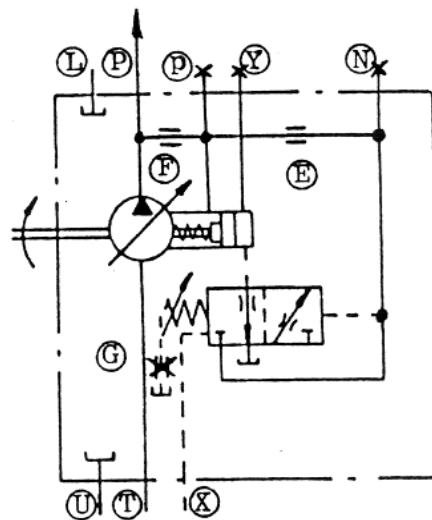
The "external" LS - regulator is necessary in applications where system pressure breakdown completely at the same time the pump is required to upstroke to maximum displacement. For example, in a press applications where negative loads may be experienced.

In this case, the regulating system of the pump is boosted by an auxiliary circuit, set to approximately 30 bar, via a shuttle valve. See schematic 3 below.

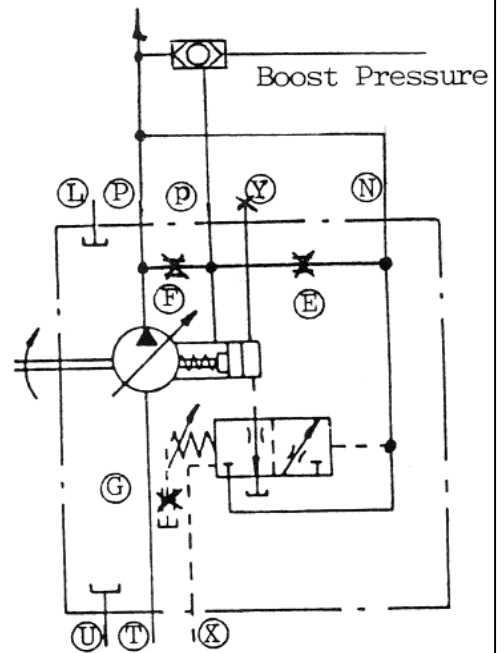
By plugging or opening the various control ports in combination with various internal passages in the regulator housing, the C-regulator can perform one of the three above mentioned functions. Refer to schematic 1 through 3 below.



Schematic 1
Constant Pressure
Regulation



Schematic 2
LS-"internal"
Regulation



Schematic 3
LS-"external"
Regulation