

Tools/Equipment Required:

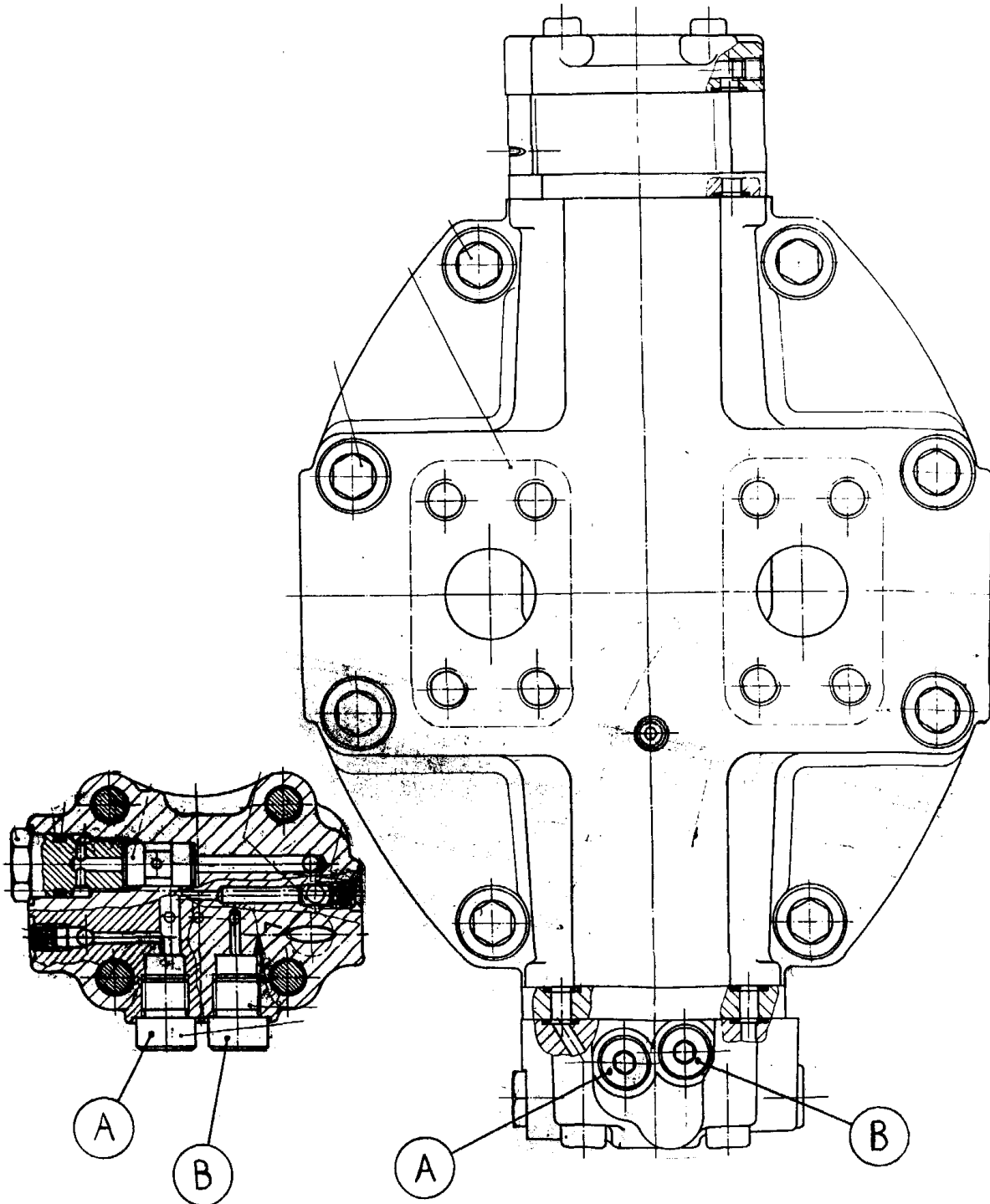
- two (2) 0-7000 psi pressure transducers (optional: pressure gauges)
- two (2) M14x1.5 port adapters
- shims (as required, refer to the Linde Spare Parts Catalog)
- pressure spring (as required)
 - for regulation begin range of 2190-2595 psi (spring part number 0009212104)
 - for regulation begin range of 2596-3335 psi (spring part number 0009212530)
 - for regulation begin range of 3336-4045 psi (spring part number 0009212608)

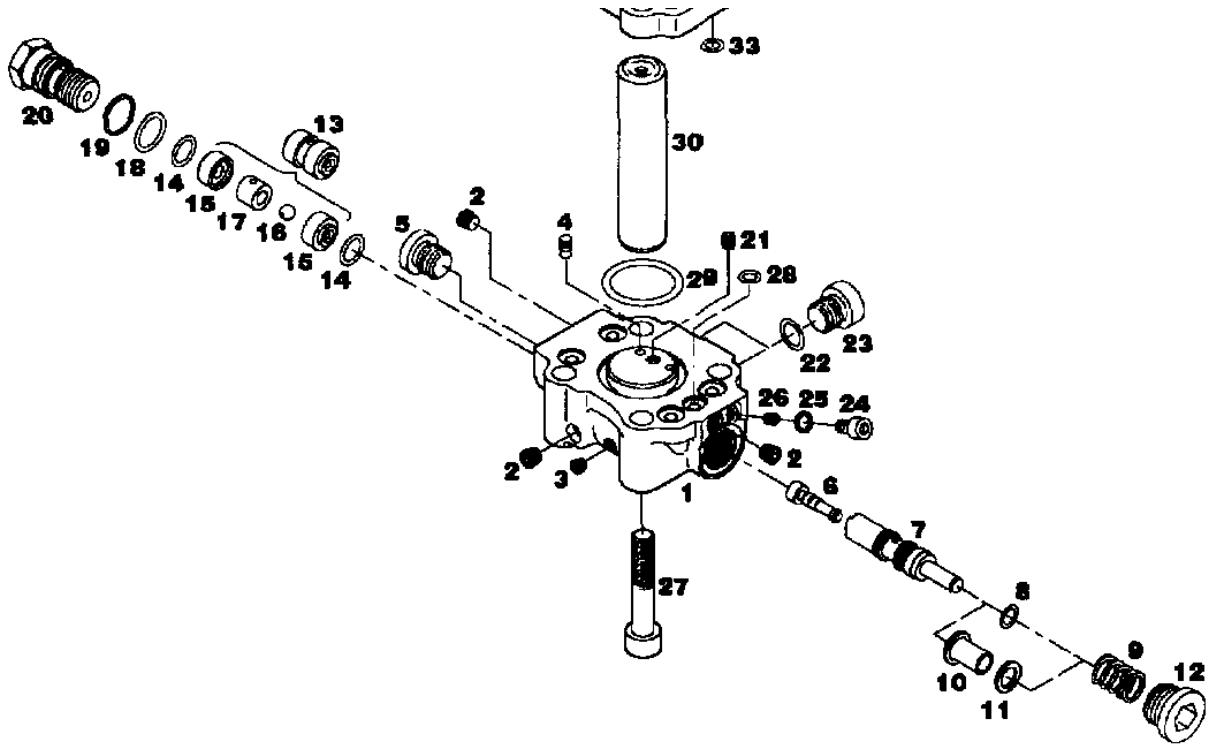
IMPORTANT:

The regulation begin setting must be set at least 300 psi **less than** the setting on any relief valve used in the BMR motor circuit to avoid premature cracking of the relief valves or interaction with the relief valves.

Adjustment Procedure:

1. Refer to the illustrations attached to the end of this Service Bulletin to reference important port and part locations.
2. Install the two (2) M14x1.5 port adapters into port "A" and "B". Then connect the two (2) 0-7000 psi pressure transducers to ports "A" and "B".
3. Port "B" is system pressure. Port "A" is motor large actuator piston pressure.
4. While monitoring both pressure transducers, slowly load the motor. Record the pressure at port "B" when the pressure at port "A" is exactly $\frac{1}{2}$ the pressure at port "B". This is the regulation begin setting.
5. To adjust the regulation begin setting: (refer to the exploded view of the motor control)
 - a. Remove the plug (item 12)
 - b. Remove the spring (item 9)
 - c. Add shims (item 8 or item 11, depending on motor configuration) to **increase** the regulation begin setting or remove to **decrease** the regulation begin setting.
 - d. Reinstall the spring (item 9) if operating within the spring range specified above. If moving to another spring range, exchange springs.
 - e. Reinstall the plug (item 12)
 - f. Repeat steps #1 through #5 as required until desired setting is acquired.







******* ATTENTION *******

You have been provided information on conversion, repair and/or service of Linde components. Proper application of the information requires specific training and may require use of specialized tooling and equipment. If you choose to proceed with the conversion, repair and/or service of the Linde component(s) absent the necessary training and/or these specialized tools, you do so at your risk.

Linde Hydraulics Corporation will accept no claim for warranty or other consideration resulting from deficiencies in the conversion, repair and/or service done in accordance with the guidance offered herein when the necessary training has not been conducted and/or required specialized tooling and equipment has not been utilized.

All requests for training must be coordinated through your Linde Account Manager. He can also provide you price and availability of any specialized tooling.

Questions regarding the information provided or this disclaimer should be addressed to the Warranty & Service Department, Linde Hydraulics Corporation.

5089 Western Reserve Road
Canfield, OH 44406
330.533.6801 (Telephone)
330.533.9873 (Facsimile)
www.lindeamerica.com (Web Site)